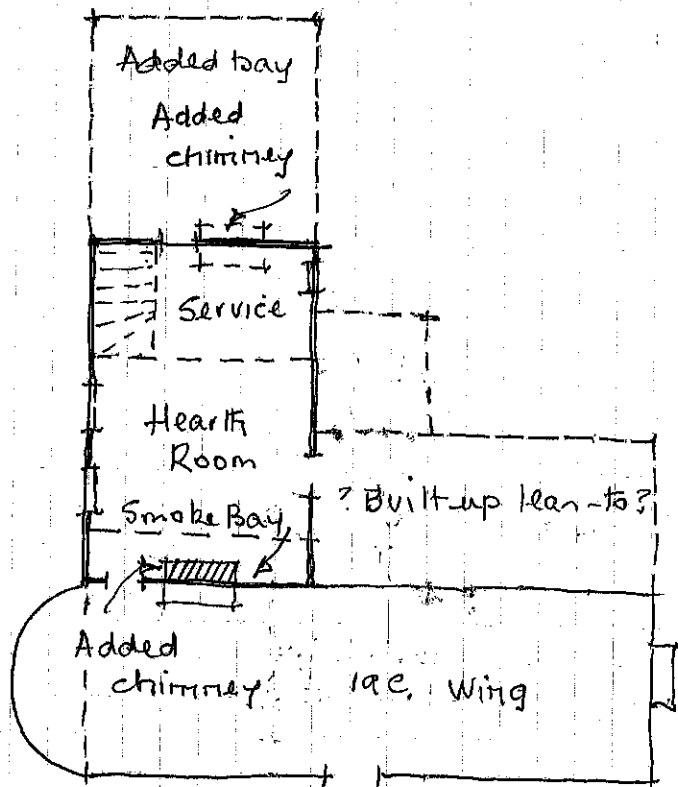


5/79



A late 16 C. 3 bay timber framed smoke bay house to which has been added a Regency villa at right angles, with a parallel range behind, which may be a built-up lean-to

The house faced the old road, West, but the house has now been turned to face the new road, South.

The smoke bay house probably consisted of hearth room, service room, possibly with stairs, and smoke bay into which a chimney was added. It is possible that the door and stairs were also in this bay. Heart room has pine beam with lamb's tongue stop. Service room has plain joists. Corner tension braces, straight wind braces. Clamped purlins, pegged rafters. North end half hipped with three Queen posts. Truss in front of smoke bay has two Queen posts, and chiselled (?) carpenter's marks. Evidence of diamond mullioned windows in room over Heart Room. House built into hillside.

Regency house rendered with rusticated quoins & low pitched slated roof; two reception rooms & central hall. Smoke bay house rendered over with slate roof to match.

Moulded skirtings & cornices with reeding over ceiling

